



14 CORNHILL

LONDON • EC3

PRIME CITY OF LONDON
LEISURE, BAR OR RETAIL OPPORTUNITY TO LET



STUNNING
CITY SPACE

TAKE A VIRTUAL TOUR





UP TO 15,000 SQ FT OF FLAGSHIP SPACE

14 Cornhill is a prominent building in the City of London, close to the Bank of England and right in the heart of the Square Mile.

This is a unique former Banking Hall space arranged on the ground floor and first floor with glazed entrances from both Cornhill and Lombard Street. The building is suitable for various uses including retail, hospitality, restaurant, banqueting and conference space, museum or gallery, and major brand showroom.



1.



2.

1. Royal Exchange & Cornhill
2. 14 Cornhill Exterior

14 CORNHILL

The Royal Exchange

Bank  

London Bridge  

Cannon Street  

Bloomberg Arcade

Bank of England

The Ned

PERFECTLY PLACED
IN THE HEART OF
THE SQUARE MILE





THE CITY'S PREMIER RETAILING THOROUGHFARE

The Royal Exchange and the Cornhill area is home to amazing architecture, luxury shopping and all-day dining experiences, boutiques, eateries, cafés and bars.



2.

- 1. Fortnum & Mason
- 2. Penhaligon's
- 3. Rolex
- 4. Hermés



1.



3.



4.

The intersection with Cornhill and Threadneedle Street is an ever-evolving hub of the City home to international brands and flagship retailers such as Hermés, Jo Malone, Boodles and Tiffany & Co.



1.



2.



3.

The finest food, drink and entertainment the City has to offer is all at your feet, no matter what time of the day, there is an option for every occasion. From coffee at Grind, dinner at Bloomberg Place and evening drinks at The Ned.



4.



A PLACE FOR MORNING
COFFEE, FINE DINING
EXPERIENCES & LATE
NIGHT COCKTAILS

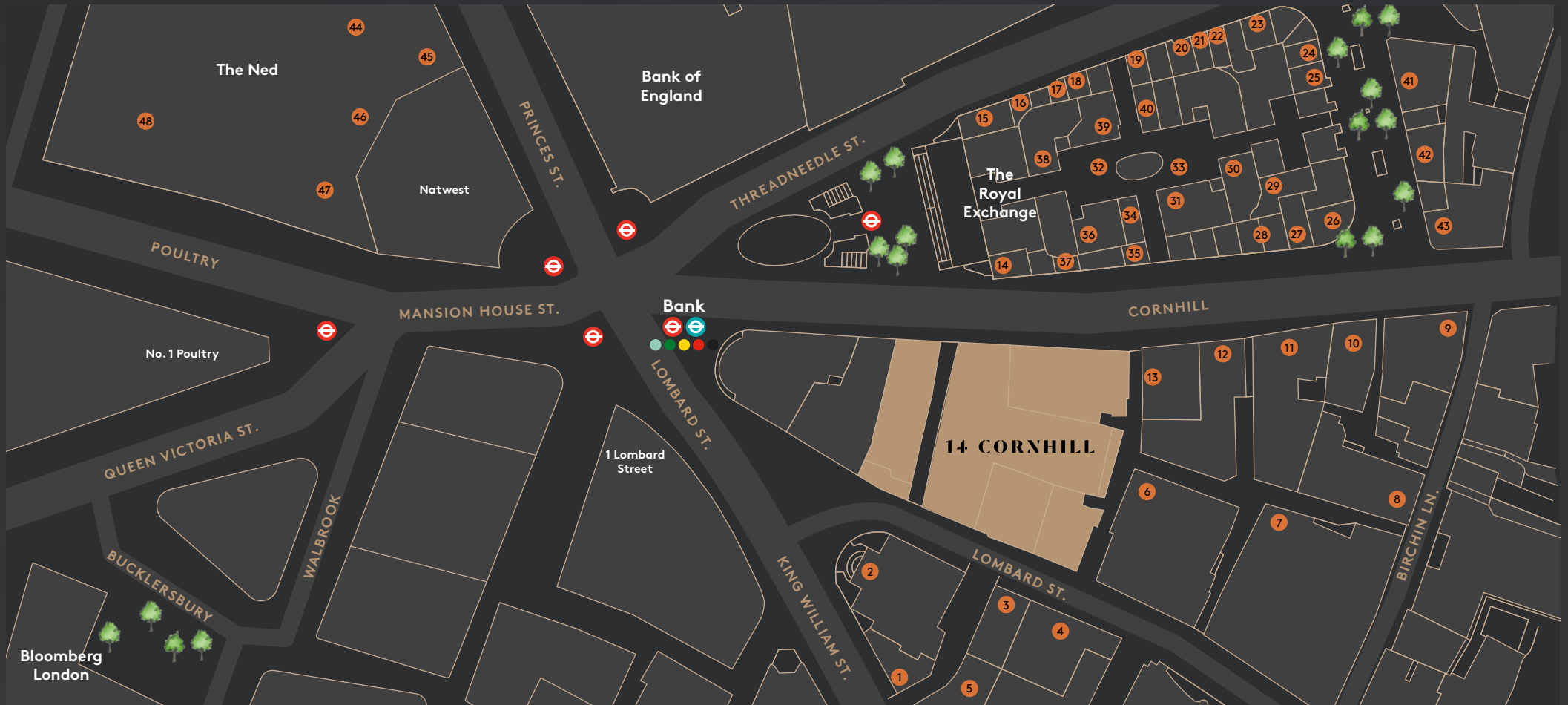
1. The Grind, The Royal Exchange
2. Vinoteca, Bloomberg Arcade
3. Cecconi's, The Ned
4. Panino Giusto, The Royal Exchange



THE CITY HUB

Bank Underground station is located adjacent, offering great connections across London.

- | | | | | |
|--------------------------|-----------------------------|---------------------------|-----------------------------|----------------------|
| 1 Starbucks | 11 Pitcher & Piano | 21 Tom Davis Opticians | 31 Tiffany & Co. | 41 Panino Giusto |
| 2 The Cosy Coffee Corner | 12 Forge | 22 Jo Malone | 32 Fortnum's Bar | 42 L.K. Bennett |
| 3 Pret A Manger | 13 Garraway's Coffee House | 23 Watches of Switzerland | 33 Courtyard Café | 43 Louis Vuitton |
| 4 Sainsbury's Local | 14 Tateossian | 24 Aspinall of London | 34 Bremont Watches | 44 Kaia Asian |
| 5 Coco Di Mama | 15 Grind | 25 Leica Store City | 35 Penhaligon's | 45 Café Sou |
| 6 Eight Members Club | 16 Bamford Grooming | 26 Mont Blanc | 36 Watchfinder & Co. | 46 Cecconi's Italian |
| 7 Honest Burgers | 17 Pretty Ballerinas | 27 Hermès | 37 Searle & Co. | 47 Malibu Kitchen |
| 8 Arkesden Partners | 18 Royal Exchange Jewellers | 28 Smythson | 38 Royal Exchange Jewellers | 48 Millie's Lounge |
| 9 Silk & Grain | 19 Church's Shoes | 29 Castle Galleries | 39 Boodles | |
| 10 T.M. Lewin | 20 Crockett & Jones | 30 Georg Jensen Jewellery | 40 Omega | |





A DECADENT VISUAL SPACE



- Views from the first floor over Cornhill to the Bank of England
- An internal balcony area overlooking the majestic Banking Hall area
- The Banking Hall is a clear unobstructed area with a ceiling height of 30 ft
- Dual balustrade staircase, leading to the first floor open plan space
- Rear kitchens and service areas



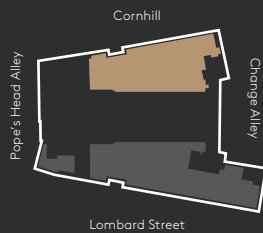
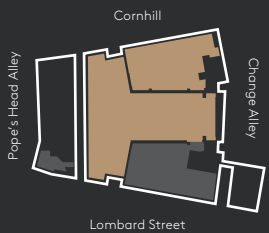
OPTION ONE
 CORNHILL FLAGSHIP STORE
 RETAIL & LEISURE

Floor	sq ft	sq m
Ground	10,375	964
Mezzanine	5,000	465
Total	15,375	1,429

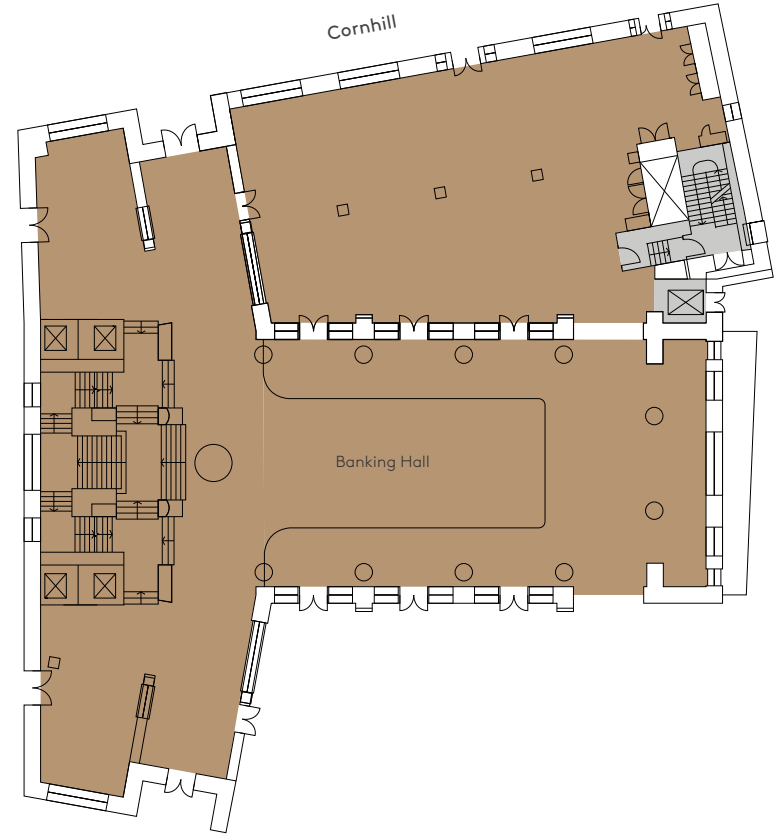
Floor Key

Ground Floor

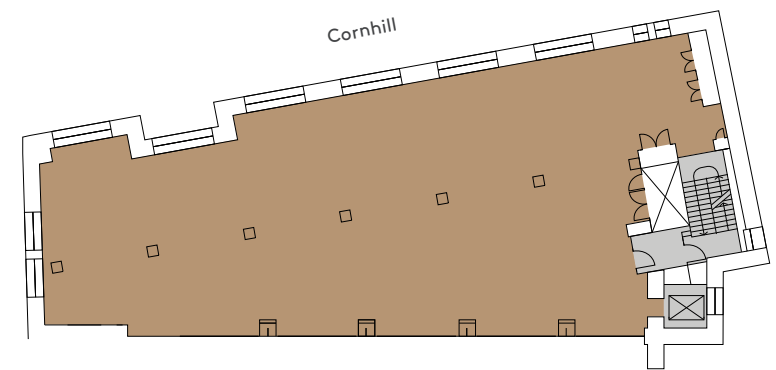
Mezzanine



Ground Floor
 10,375 sq ft (964 sq m)



Mezzanine
 5,000 sq ft (465 sq m)



For indicative purposes only. Not to scale.





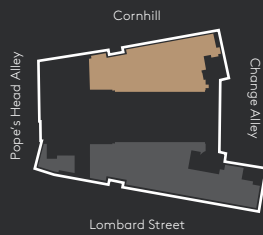
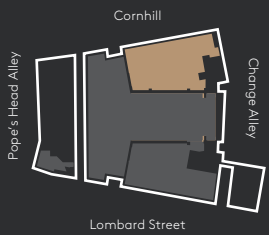
OPTION TWO
CORNHILL
RETAIL & LEISURE

Floor	sq ft	sq m
Ground	3,600	334
Mezzanine	5,000	465
Total	8,600	799

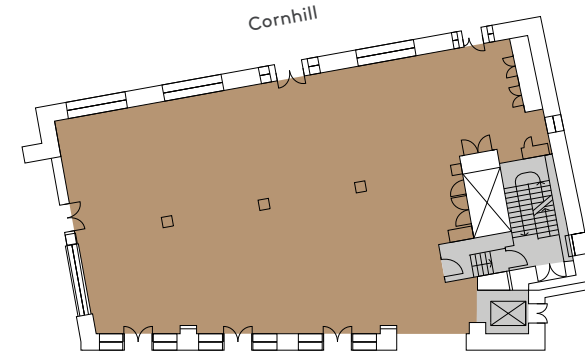
Floor Key

Ground Floor

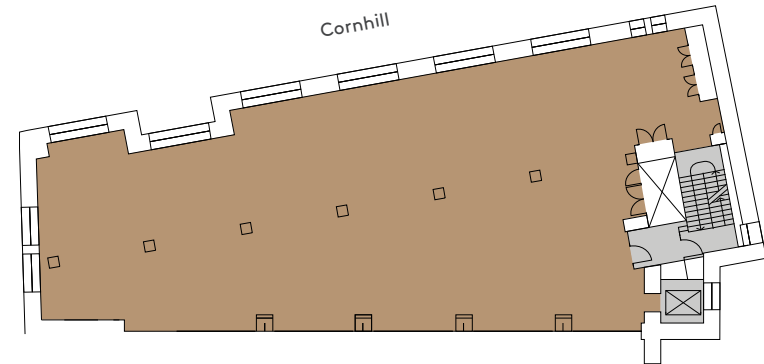
Mezzanine



Ground Floor
3,600 sq ft (334 sq m)



Mezzanine
5,000 sq ft (465 sq m)



For indicative purposes only. Not to scale.





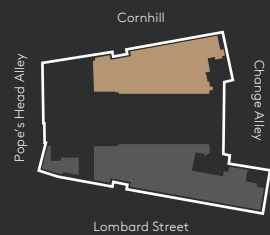
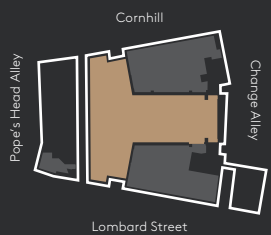
OPTION THREE
FLAGSHIP BANKING HALL
RETAIL & LEISURE

Floor	sq ft	sq m
Ground	6,775	629
Mezzanine	5,000	465
Total	11,775	1,094

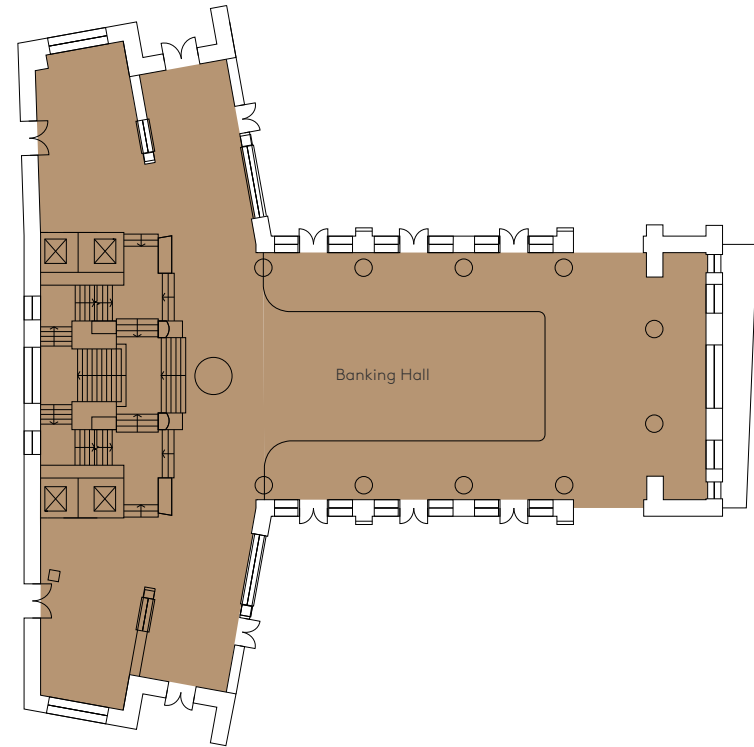
Floor Key

Ground Floor

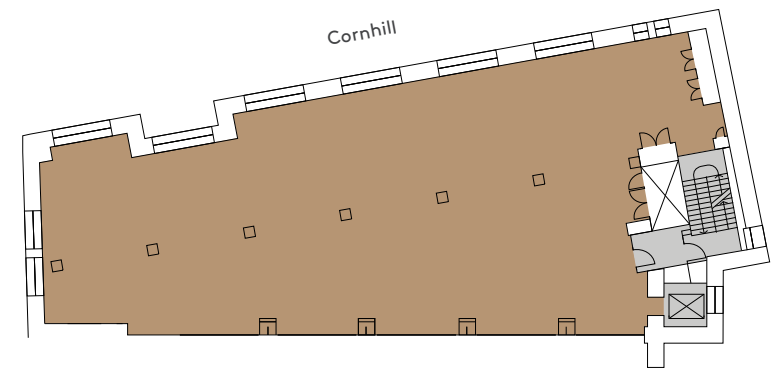
Mezzanine



Ground Floor
 6,775 sq ft (629 sq m)



Mezzanine
 5,000 sq ft (465 sq m)



For indicative purposes only. Not to scale.





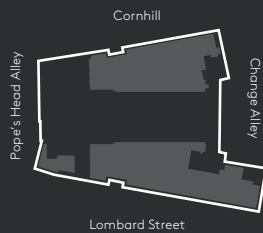
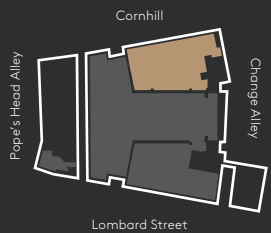
OPTION FOUR
CORNHILL RETAIL
SPACE

Floor	sq ft	sq m
Ground	3,600	334
Total	3,600	334

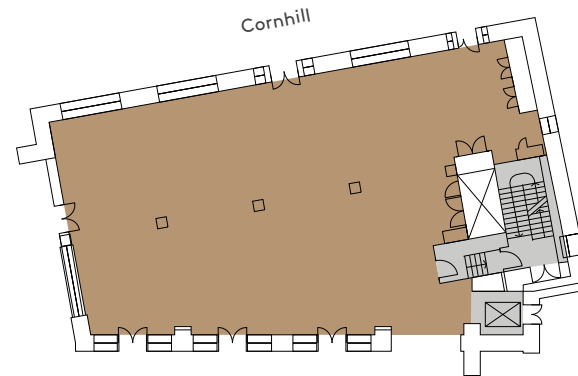
Floor Key

Ground Floor

Mezzanine



Ground Floor
3,600 sq ft (334 sq m)



For indicative purposes only. Not to scale.





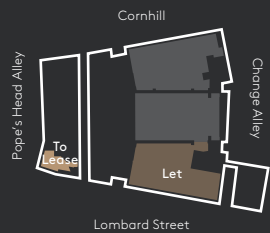
LOMBARD STREET RETAIL

Plans for reference only.

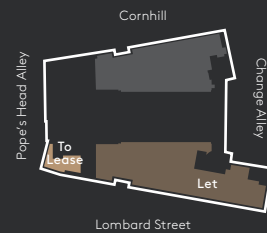
Floor	sq ft	sq m	Availability
Ground	325	30	To Lease
First	445	41	To Lease
Total	770	71	
Ground	2,700	251	Let
Mezzanine	5,975	555	Let
Total	8,450	806	

Floor Key

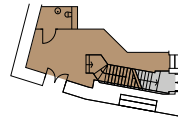
Ground Floor



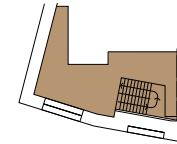
Mezzanine / First Floor



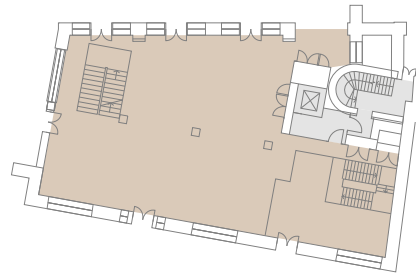
Ground Floor - To Lease
325 sq ft (30 sq m)



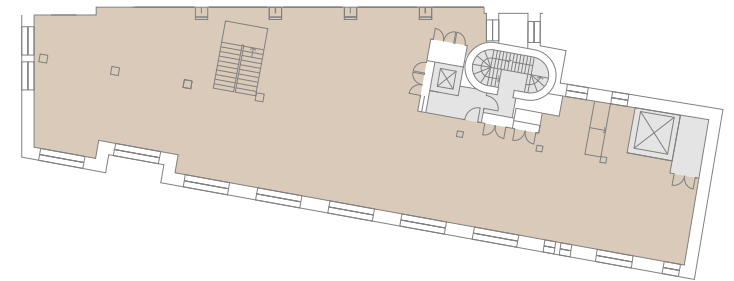
First Floor - To Lease
445 sq ft (41 sq m)



Ground Floor - Let
2,700 sq ft (251 sq m)



Mezzanine - Let
5,975 sq ft (555 sq m)



For indicative purposes only. Not to scale.



FURTHER INFORMATION

Lease

To be for a term by arrangement.

Rent

On application.

EPC

Available on request.

Rateable values on application.

Viewing

Strictly through sole letting agents or via the [Virtual Tour](#).

**JAMES ANDREW
INTERNATIONAL**

Jeremy Grey

020 3141 6603

jhg@jamesandrew.co.uk

Roy Somerston

020 7317 1572

rsomerston@jamesandrew.co.uk

Lisa Moran

020 3141 6601

lmoran@jamesandrew.co.uk

Harry Blanshard

020 3141 6602

hblanshard@jamesandrew.co.uk

14 CORNHILL. LONDON

Subject to Contract. James Andrew International for themselves and the vendor of this property give notice that these particulars do not form, or form part of, any offer or contract. They are intended to give fair description of the property and whilst every effort has been made to ensure their accuracy this cannot be guaranteed. Any intending purchaser must therefore satisfy themselves by inspection or otherwise. Neither James Andrew International nor any of its employees, has any authority to make or give any further representations or warranty whatsoever in relation to this property. All prices and rents quoted are net of VAT.

Designed and produced by [Cre8te](#) – 020 3468 5760 – cre8te.london

